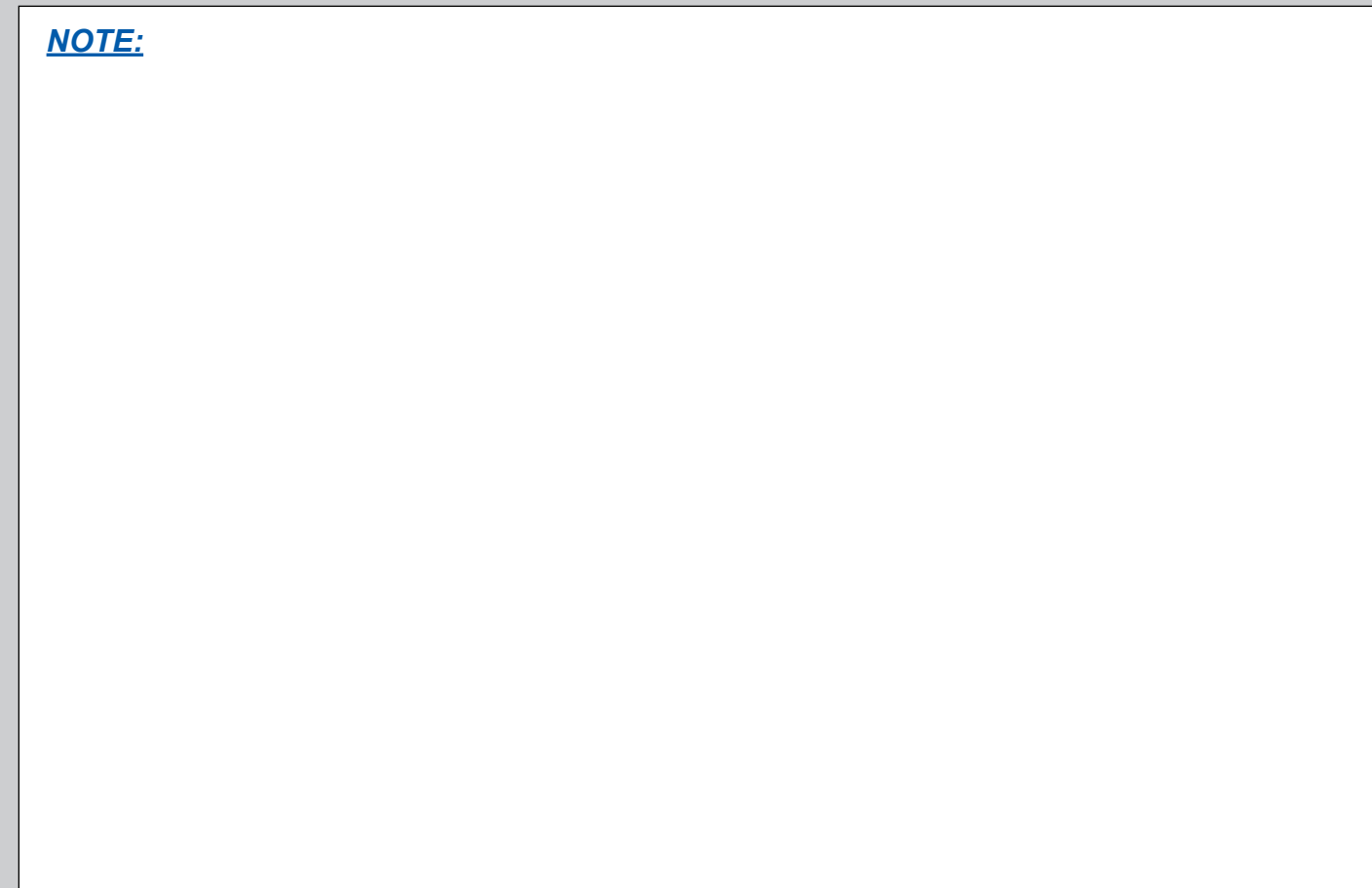
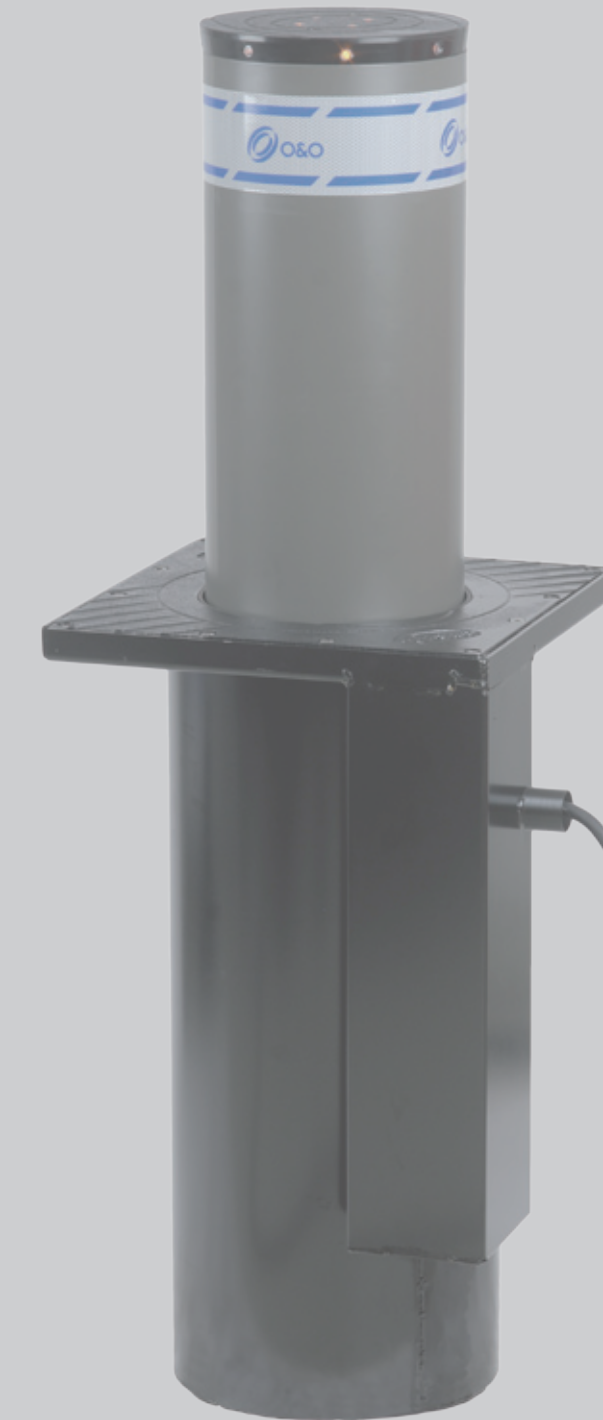




NOTE:



cod. 035526-EN 03/12



**NEW HYDRAULIC
BOLLARD
“GRIZZLY”**

O&O S.r.l.
Via Europa, 2
42015 Correggio (RE)
Italy 

Tel. +39 0522 740111
Fax. +39 0522 631290
Mail: oeo@oeo.it
Web: www.oeo.it

www.oeo.it

EN

SHORT:

Demonstrating the continuous research to improve our products and service, today O&O has expanded its range of automatic bollards to include hydraulic technology. Following in-depth studies conducted in collaboration with renowned research centres and various product tests, O&O presents the first models with the following features.

STRENGTHS:

PRE-INSTALLATION

The bollard casing is fully independent from the motor, allowing the installer to prepare the ground for future installation. Fig.1

SIMPLIFIED INSTALLATION

With many technical features adopted during the engineering phase, "GRIZZLY" requires less digging for installation and can also be pre-installed.

NEW DESIGN

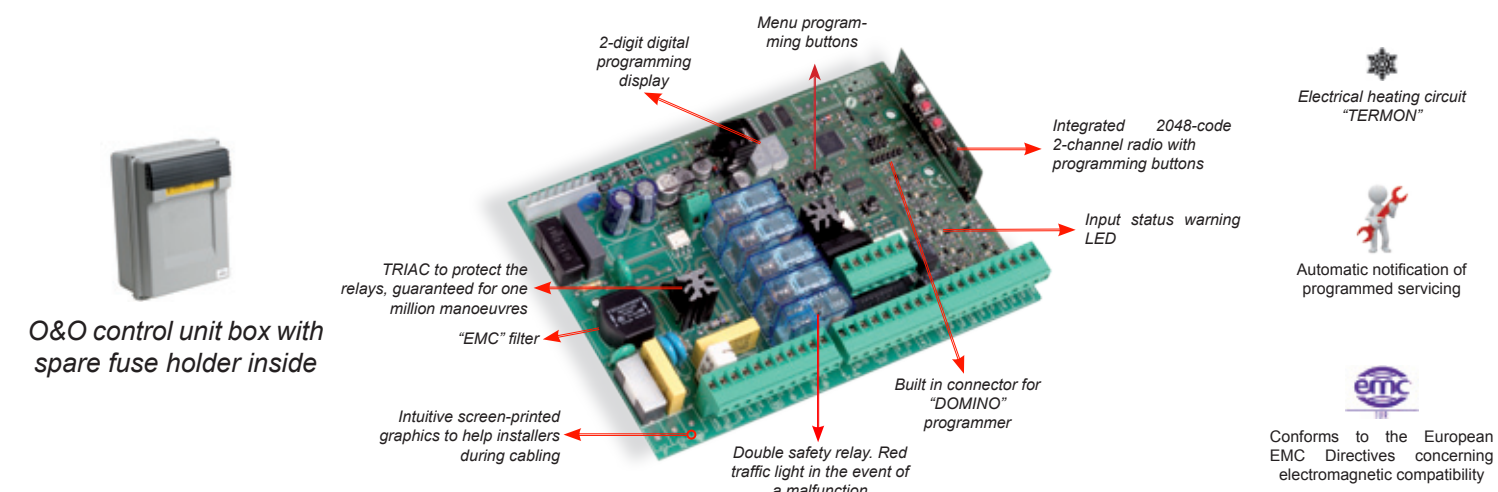
Designed and produced to make the bollard blend in perfectly to any city or private environment, with the new square shaped flange and the new attractive design

SAFE

A special safety valve, fitted as standard on all models, stops the bollard and reverses the direction if an obstacle is detected.

NEW "CDS" CONTROL BOARD:

New control board suitable for all bollards series (except approved bollards version "DK/L").



MAINTENANCE

Extremely easy to maintain, with no need for hoists or manpower to lift the motor. Remove the flange, disconnect the connectors from the pump, slide off the casing "CDF" and carry out maintenance.

PERFORMANCE

Intensive use, tested for over 3,000 manoeuvres a day, built in active safety devices (direction reversal, movement buzzer, axial and radial high-intensity leds), handling speed, size, all work to assure the high performance of the "GRIZZLY" bollards.

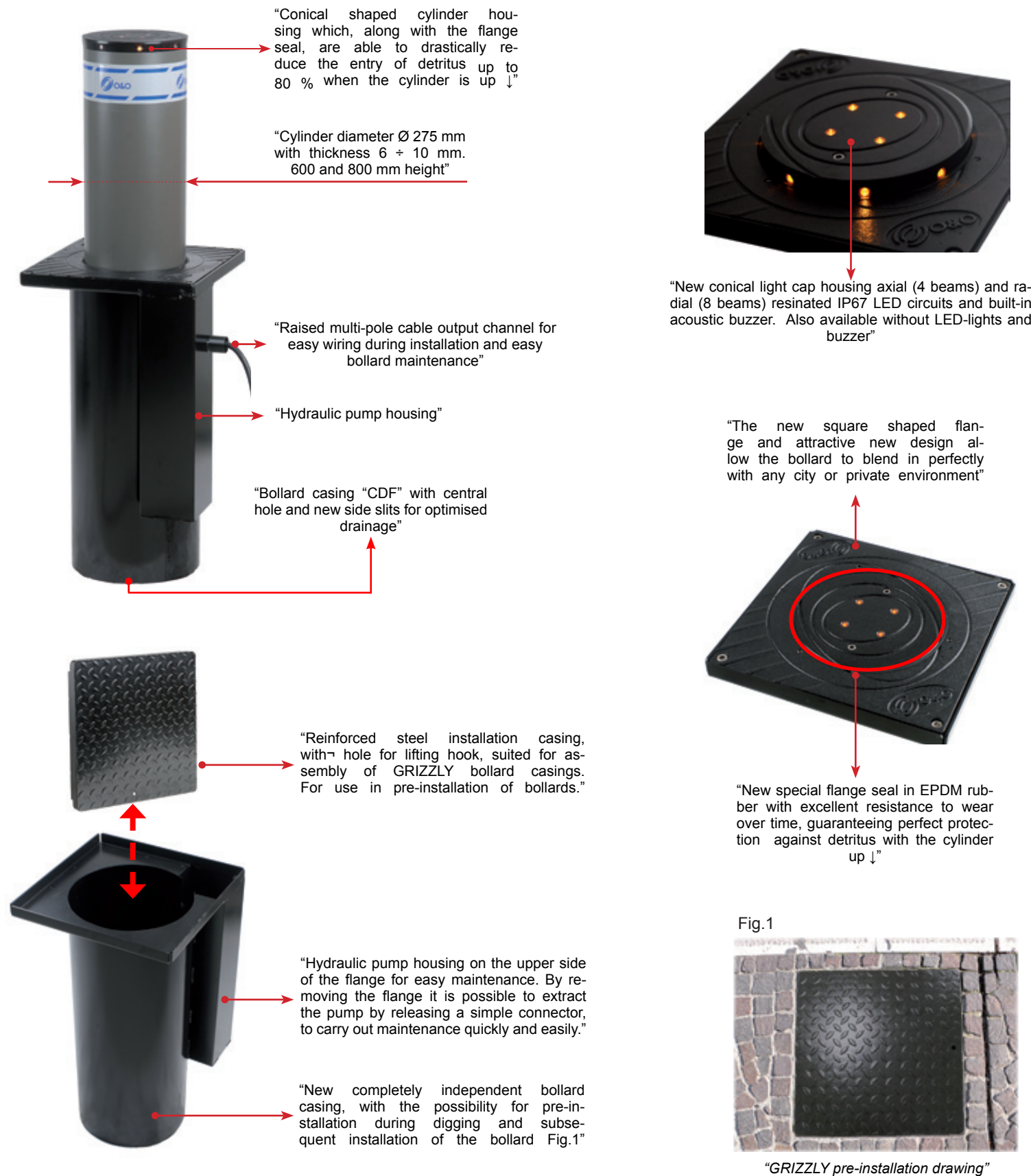
NEW ANTI-DEBRIS SYSTEM

The top of the cylinder (light crown) and the anti-detritus seal built into the flange were designed in order to prevent the entry of detritus inside the casing when the cylinder is up by almost 80% ↓

INTEGRATED DEVICE "TERMON"

The new control boards "CDS" are provided standard with heating systems "TERMON" capable to ensure the proper functioning of the machine down to -30 ° C

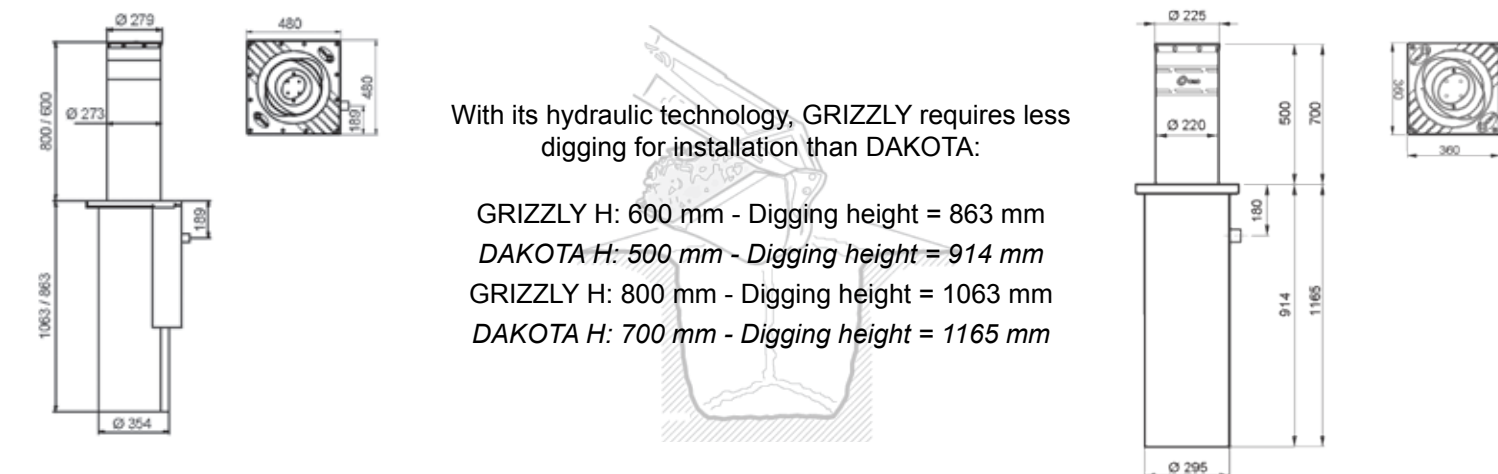
"All metal frame parts are treated in order to ensure high resistance to corrosion"



SOME TECHNICAL DETAILS:

- 230 Vac 50 Hz supply voltage
- Opening time 5 seconds H:600 mm and 6 seconds H:800 mm
- Safety valve that reverses the direction if an obstacle is detected
- Bollard available also in the special safety version, "SCT" which in the event of a blackout keeps the cylinder up ↑
- IP 67 protection level
- Working temperature from -15 °C to +60 °C → -30 °C + 60 °C with "TERMON" integrated heating circuit
- Cylinder in RAL 7022 painted iron or stainless steel with cylinder thickness 6 + 10 mm Ø 273 mm
- External control unit mod. CDS able to manage up to 4 bollards
- Automatic hand-manoeuve in the event of a blackout except the "SCT" version
- For intensive use - 3,000 manoeuvres a day

SIZE:



With its hydraulic technology, GRIZZLY requires less digging for installation than DAKOTA:

ACCESSORIES:

